

There's a  
whole new world  
out there



The Romahome Range

**Romahome**





*The Romahome and SVP production facility on the Isle of Wight with General Managers Adam Coombe and Brian Bailey*

## Romahome **welcome**

Romahome Ltd are specialists in the manufacture of micro coach-built motor homes, with a manufacturing plant based on the Isle of Wight, combined with a specialised dealer network across the UK and Ireland.

Since the first Romahome was built in 1962, Romahome's philosophy has been to produce motor homes that have the versatility, economy and drivability of a car combined with all the features of a motor home, this is why many of our owners have their Romahome as their only vehicle.

Romahomes have evolved even further on this theme by introducing new models that incorporate four forward facing seats and introducing a low profile motorhome,

which can be parked in most garages and gain access into multistorey car parks.

Romahome's factory is a 35,000 square foot production facility with design and production of the glass-fibre body shells and furniture undertaken here with the capacity to build in excess of 500 vehicles per year.

The glass-fibre one-piece shell used in the production of Romahomes has won many awards for quality and design alike, and forms the basis of the well insulated motor home - in fact in Northern Sweden where they are also sold they have been used in temperatures of -30 degrees Celsius.





Bedtime singles



Bedtime double



Choice of upholstery



# Duo Outlook

The Duo range meets the needs of urban shopping and long distance touring with ease

A two berth motorhome complete with mains hook up electrics, auxiliary battery, and three way Electrolux 60 litre fridge. Options for diesel or gas powered blown air heating systems, colour co-ordinated front seats and a dedicated toilet compartment.

The Outlook creates a comfortable and spacious living environment in the day with large panoramic windows to watch the world go by, and sleeping accommodation that provides either two permanent single beds or a king-size bed which takes a few moments to make.



Toilet option

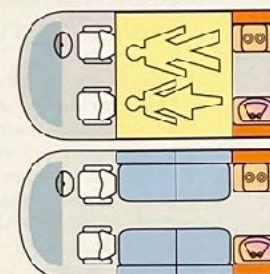


Kitchen



Kitchen (non toilet option)

Amazing economy with up to **50mpg**



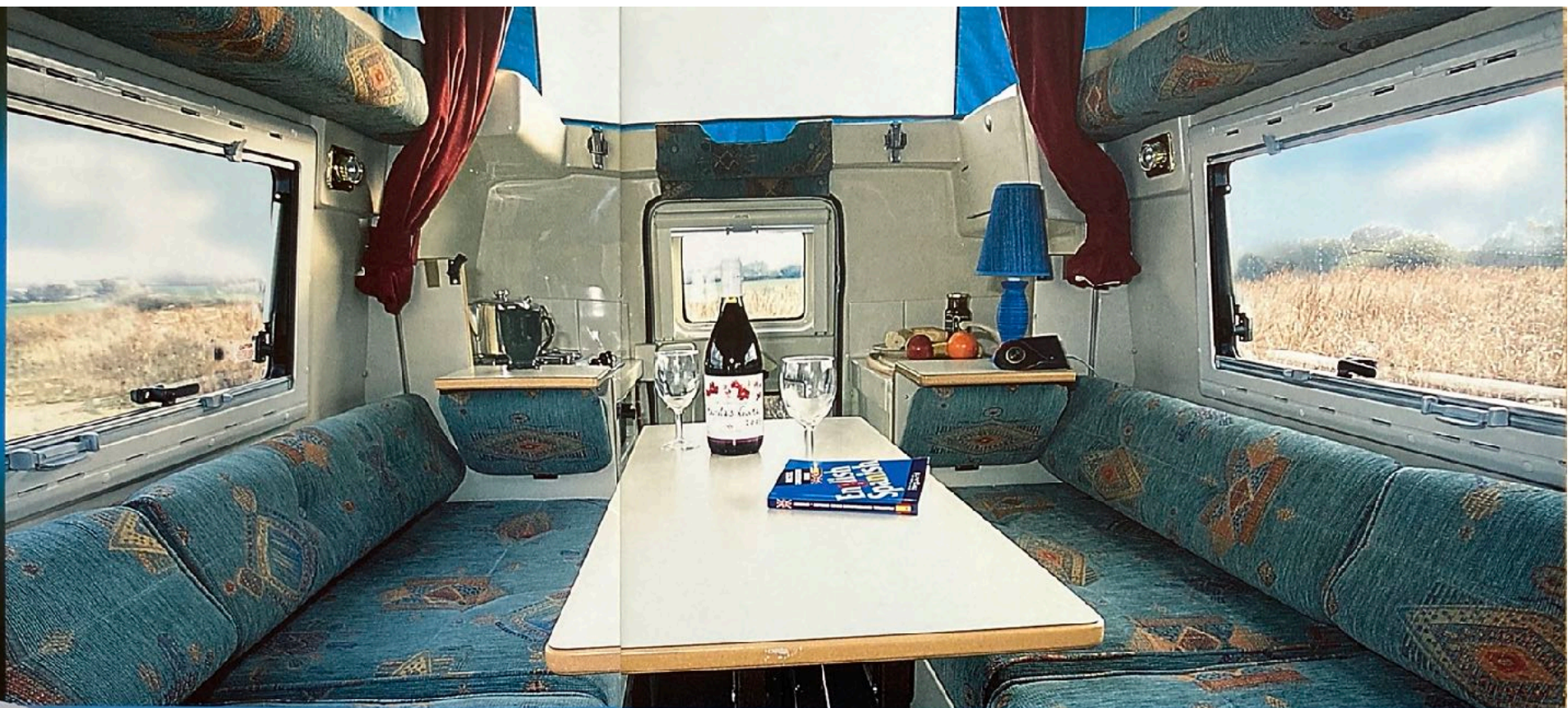
- Living area
- Kitchen
- Washroom
- Furniture
- Bed area

Duo Outlook

## Maximum use of space

The Outlook retains all that's great about a Romahome with its long lasting one piece GRP body





## Duo Hylo

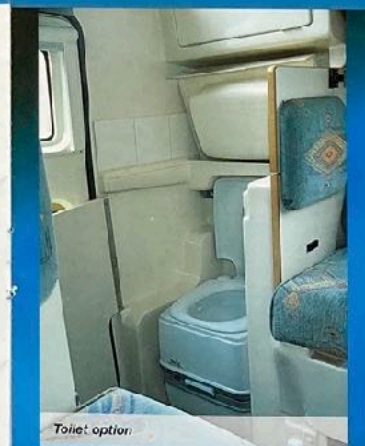
Designed to meet an ever growing demand for comfort and versatility

A low roof derivative of the Outlook encompassing all the impressive features, but thanks to its unique easy raise roof design the Hylo is low enough to fit into a domestic garage. It will also fit under standard car park height barriers and into a multi-storey car park,

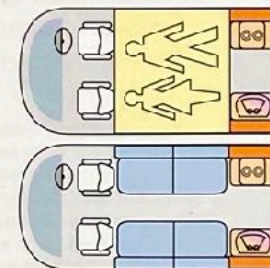
and even gain lower costs on some ferries. Yet, raise the roof - an operation that takes just seconds - and the Hylo has the standing room and interior space to make a tardis look cramped. In the transit position the Hylo is only 1.93m high (6'4").

Practical yet **versatile**

The versatile Hylo allows easy access to car parks and garages



Amazing economy with up to **50mpg**



- Living area
- Kitchen
- Washroom
- Furniture
- Bed area

Duo Hylo





Bedtime double



Kitchen



Toilet option



## Duo Plus

A unique feature of the Duo Plus is the choice of in-transit seating configuration with four forward seats

The same specification and size as the Outlook but with four forward seats fitted, all with three point safety bolts and dedicated "D" shaped passenger windows. The seats are adjustable and can either be left in and simply folded

to make the two single or king-size double beds. Or they can be removed and storage bins, which make up the rest of the bulk, can be installed in seconds. The Duo Hyle can also be ordered in this configuration.

### For your all-year-round use

The Duo Plus can be equipped to provide all of the facilities found in larger motorcaravans



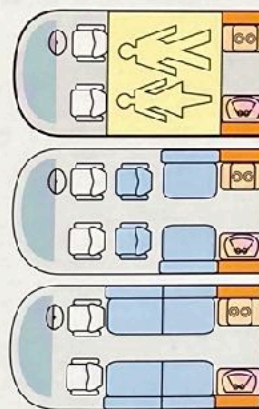
Bedtime singles



Time to eat



Amazing economy with up to **50mpg**



- Living area
- Kitchen
- Washroom
- Furniture
- Bed area

# Duo Plus





Driving and room for three passengers



Seating option 1



Seating option 2



# Dimension

The Dimension brings more space, greater flexibility and higher specifications

The Dimension is based on the short wheelbase Citroen Relay with a 2.0HD common rail turbo diesel engine, power steering, remote central locking, engine immobiliser, and electric windows as standard. Although larger than the Duc range the Dimension can still be parked in a normal parking space.

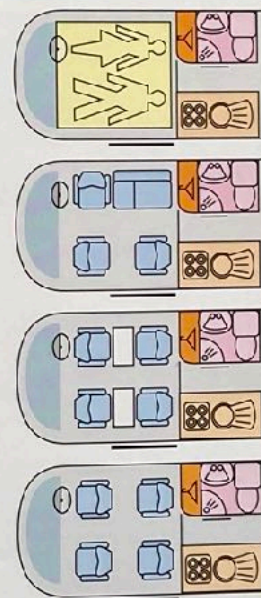
Its innovative and stylish design packages a modular interior area with living compartment, cooking, and an all in one moulded washroom. Cavernous storage areas and four fully belted seats all topped with a double skinned glass-fibre insulated roof, also incorporating aircraft style lockers, with built in down-lighters.



Bedtime singles



Bedtime double



- Living area
- Kitchen
- Washroom
- Furniture
- Bed area

Dimension

Designed to be **efficient**

Great care has been taken to provide the new Dimension with comfort, good looks and durability





# Romahome club



In September 1985 the company called together the owners of Romahomes to see if they were interested in forming a club. The 100 plus people present decided that they would like a club, and in February 1986 at the Excelsior Hotel in Birmingham the first official meeting of the club was held. In August 1986 the first Roma Club rally was held at Newmarket Racecourse. The Roma Club, now comprising in excess of 550 members, is run totally by them to encourage interest in the

Romahome, Romini and other camping products manufactured by Romahome. They hold rallies throughout the year in the UK and mainland Europe.

The main event is the AGM Rally each May supported by the company with over 400 members attending. The Roma Club has been successful in creating a very friendly atmosphere and developing close links with the manufacturer.



## SVP special vehicle projects

Special Vehicle Projects is a department within Romahome Ltd which produces LCV (light commercial vehicle) conversions, ranging from products such as breakdown vehicles, utility vehicles, small fire engines,

and even meals on wheels vehicles. The customers include the AA, National Grid, Western Power, Devon Fire and Rescue, Birmingham City Council, Bristol City Council, and WRVS to name but a few.







## Romahome Duo Hylo

OVERALL LENGTH	15.7ft / 4.7m
OVERALL WIDTH	5.7ft / 1.7m
OVERALL HEIGHT	8.4ft / 2.6m
BODY	GRP body with double skin insulation
SPARE MASS CAPACITY	300Kg
NO OF SEATS FORWARD FACING	2, all with inertia reel seat belts (4, Duo Hylo Plus only)

### STANDARD EQUIPMENT

Mains electric, complete with transformer/battery charger, secondary battery with split charging relay, Electrolux 60 litre 3 way refrigerator (12V, 240V and gas), 2 burners hob and grill, spotlights, double glazed acrylic windows, blinds and flyscreens, 2 singles or king-size double bed, under bunk storage, 20 litre fresh water and 20 litre waste water tanks, stainless steel sink with cold water tap, free standing table.

### OPTIONAL EQUIPMENT

Dedicated toilet facilities, gas or diesel blown air heating system, upholstered front seats, reversing sensors, wood effect dash, awning.

## Romahome Duo Outlook

OVERALL LENGTH	15.7ft / 4.7m
OVERALL WIDTH	5.7ft / 1.7m
OVERALL HEIGHT	7.6ft / 2.3m
BODY	GRP body with double skin insulation
SPARE MASS CAPACITY	300Kg
STANDARD EQUIPMENT	

Mains electric, complete with transformer/battery charger, secondary battery with split charging relay, Electrolux 60 litre 3 way refrigerator (12V, 240V and gas), 2 burners hob and grill, spotlights, double glazed acrylic windows, blinds and flyscreens, 2 singles or king-size double bed, under bunk storage, 20 litre fresh water and 20 litre waste water tanks, stainless steel sink with cold water tap, free standing table.

### OPTIONAL EQUIPMENT

Dedicated toilet facilities, gas or diesel blown air heating system, upholstered front seats, reversing sensors, wood effect dash, awning.

## Romahome Duo Plus

OVERALL LENGTH	15.7ft / 4.7m
OVERALL WIDTH	5.7ft / 1.7m
OVERALL HEIGHT	7.6ft / 2.3m
BODY	GRP body with double skin insulation
SPARE MASS CAPACITY	120Kg Duo Plus
NO OF SEATS FORWARD FACING	4, all with inertia reel seat belts

### STANDARD EQUIPMENT

Mains electric, complete with transformer/battery charger, secondary battery with split charging relay, Electrolux 60 litre 3 way refrigerator (12V, 240V and gas), 2 burners hob and grill, spotlights, double glazed acrylic windows, blinds and flyscreens, 2 singles or king-size double bed, under bunk storage, 20 litre fresh water and 20 litre waste water tanks, stainless steel sink with cold water tap, free standing table.

### OPTIONAL EQUIPMENT

Dedicated toilet facilities, gas or diesel blown air heating system, upholstered front seats, reversing sensors, wood effect dash, awning.



## Romahome Dimension

OVERALL LENGTH	15.7ft / 4.7m
OVERALL WIDTH	6.5ft / 2.0m
OVERALL HEIGHT	8.5ft / 2.6m
SPARE MASS CAPACITY	430Kg
STANDARD EQUIPMENT	

Driving: Four seat-driving capsule created within steel bodywork for strength. Three point seat belts.

Body: GRP double skin insulated roof on manufacturers steel body.

Dining: The dining room is created around twin tables with adjustable seats. Mains electrics with secondary battery.

Kitchen: Over 2m<sup>2</sup> (6ft) of GRP working surface. Hot & cold water plumbed in. Four-burner hob and oven, fridge with ice compartment, 2 power points, 12V TV aerial socket and storage cupboards.

Bathroom: Shower room with swivel cassette W.C. Sinks, vanity cupboard, sink, shower tray and over cupboard.

Bedroom: Large double bed or two singles.

OPTIONAL EQUIPMENT

Wood effect dash, Eberspacher blown air heating, pull out awning F451, tow bar, Flamma turbo vent.

ENGINE 1997cc HDI Turbo Diesel 50hp

COOLING Liquid with thermostatically controlled fan

TRANSMISSION Front wheel drive, 5 speed, manual all, synchromesh, gearbox with, hydraulic clutch

BRAKES Ventilated front disc, rear drums

SUSPENSION Front: Independent McPherson strut type with heavy duty coil springs and anti-roll bars. Rear: Dual rate, semi-elliptical leaf springs with telescopic shock absorbers

STEERING Power assisted with impact absorbing safety steering column

TYRES 195/70R16

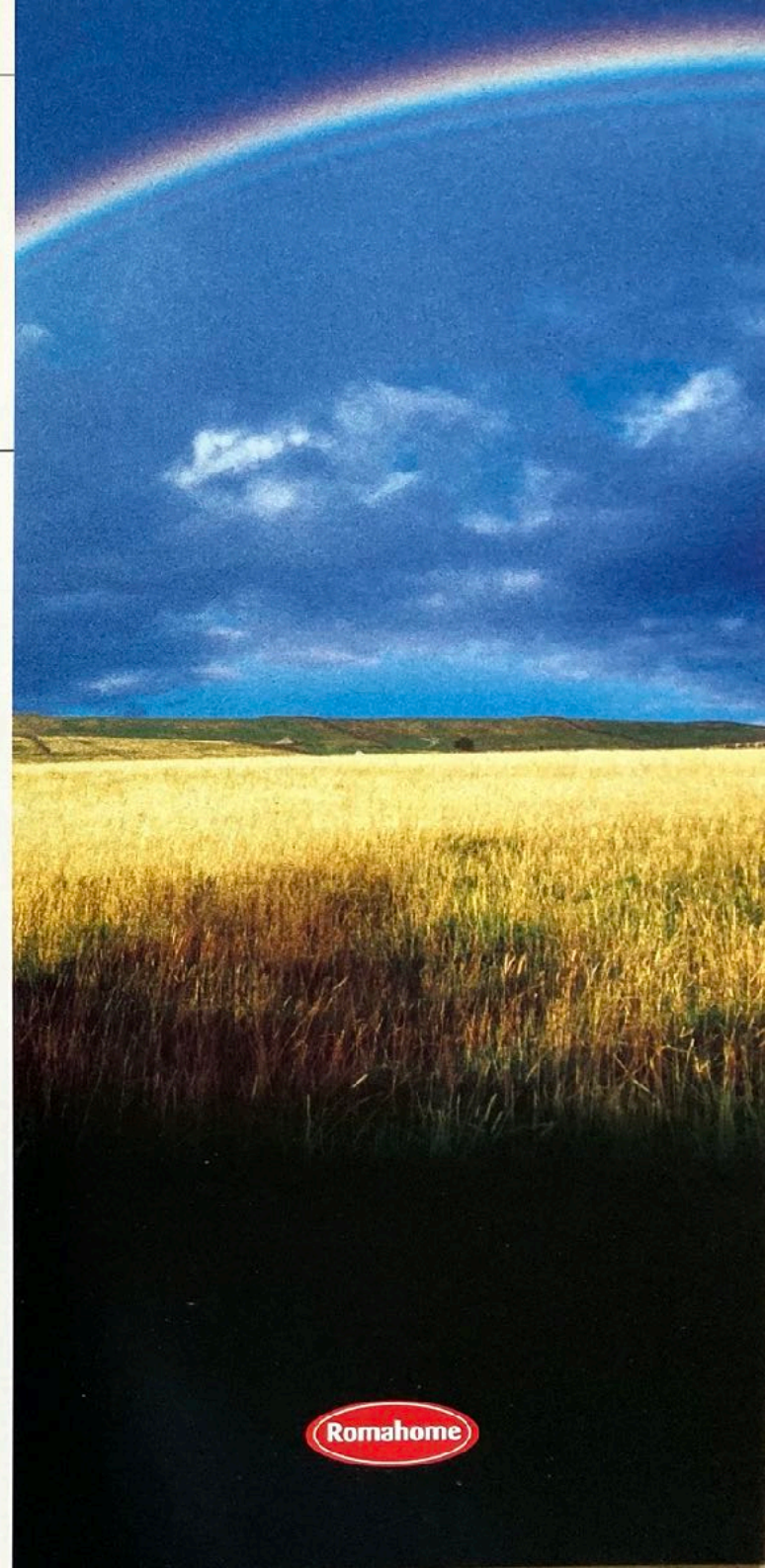
FUEL TANK 80 litres

DRIVING COMPARTMENT Electric windows, remote central locking, height adjustable steering column, stereo radio/cassette clock, rev counter, electric adjustable door mirrors, pre-tensioning inertia reel seatbelts, side impact bars.

CITROËN RELAY OPTIONS 2.2 HDI Turbo Diesel 104hp, Air conditioning

## Citroën Berlingo as used on all Duo models

ENGINE	1800cc 71hp Diesel
COOLING	Liquid with thermostatically controlled fan
TRANSMISSION	Front wheel drive, 5 speed manual all synchromesh gearbox
BRAKES	Ventilated front disc, rear drums
SUSPENSION	Independent McPherson strut type with anti-roll bar at front, low profile trailing arm torsion bar springs and horizontal dampers with anti-roll bar at rear
STEERING	Power assisted
TYRES	175/65R14
FUEL TANK	60 litres
DRIVING COMPARTMENT	Driver's airbag, remote central locking, electric windows, height adjustable steering column, stereo radio/cassette, clock, internally adjustable mirrors, height adjustable pre-tensioning inertia reel seatbelts, height adjustable front seat headrests, folding front passenger seat with hidden underseat storage compartment, side impact bars.
OPTIONAL EQUIPMENT	Air conditioning / ABS / 1907cc 90hp HDI Turbo Diesel





your dealer

**Romahome**

There's a whole new world out there



Romahome Ltd,  
Prospect Road,  
Cowes, Isle of Wight  
PO31 7AD

Tel 01983 262451  
Fax 01983 260266  
email [sales@romahome.com](mailto:sales@romahome.com)  
web [www.romahome.com](http://www.romahome.com)



Every endeavour has been made to ensure that the information contained within this brochure was accurate at the time of going to press. The company however reserves the right, while preserving the essential characteristics of the models described and illustrated, to introduce at any time modifications, changes to details, equipment or accessories as may be considered necessary to improve the model described or for any other reason of a constructional or operational nature.



