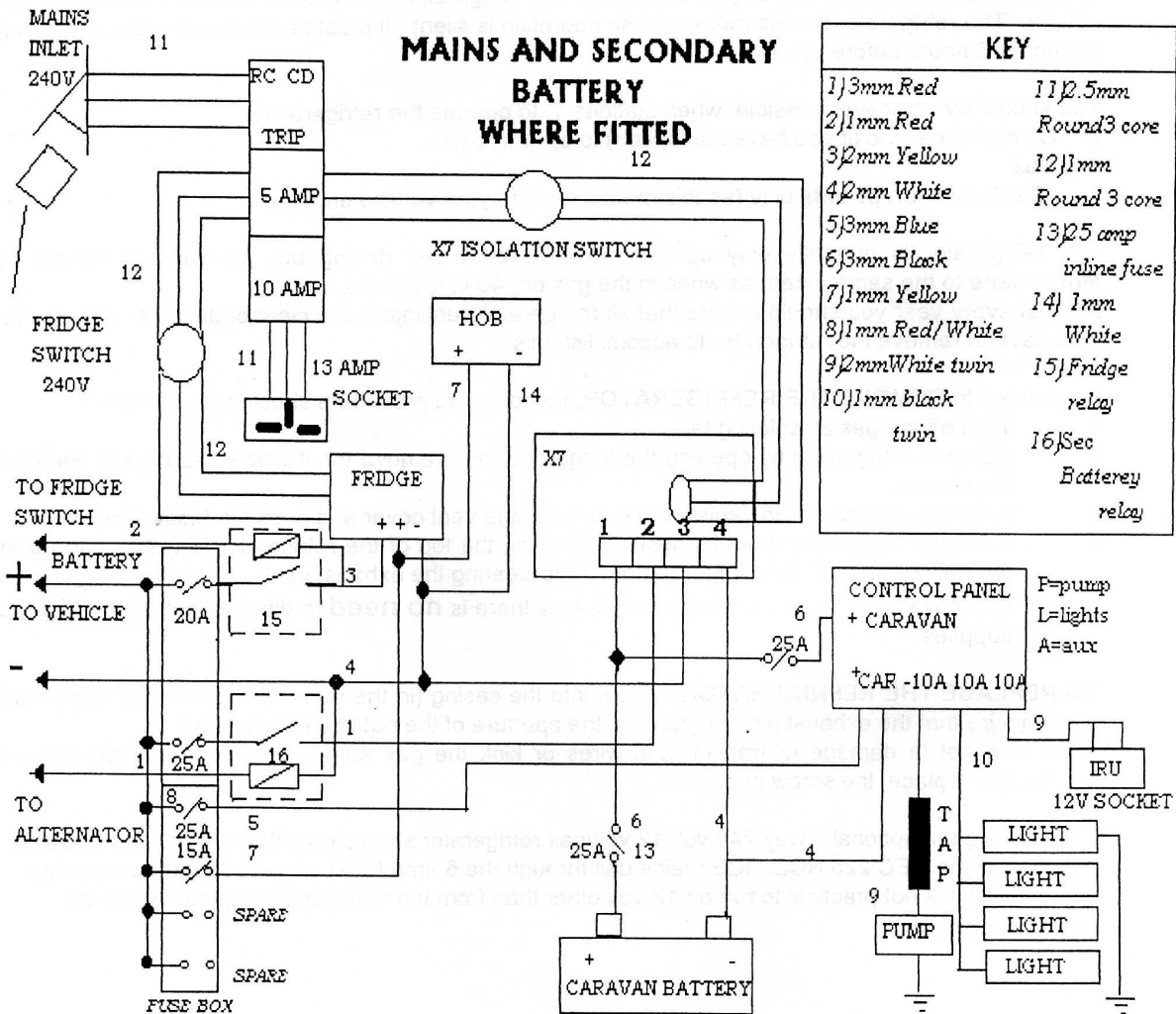


Romahome Duo,
Romahome Duo Plus

MAINS WIRING DIAGRAM



This diagram shows the mains hook up and secondary battery (where fitted)

MAINTENANCE OF YOUR UNIT

Although your **ROMAHOME** has been built from approved materials and the main body from Lloyds Approved Marine Grade Resins and Fibreglass, able to withstand rigorous use, you are strongly recommended to give it the care and attention which it deserves, and so prolong its life and give you the benefits and enjoyment you will obviously appreciate.

The **MAIN BODY** should be kept clean by regular washing with warm soapy water and a soft cloth. If the gloss has been lost, you can soon bring it back using a mild abrasive car polishing compound followed by a good quality car wax. **SCRATCHES** may be removed by carefully rubbing with "Wet and Dry" abrasive paper (used wet and using fine as grade as possible (depending on the scratch severity) and finishing with polishing compound and polish. Structural damage to the body itself may require an "Isopon Repair Kit" or reference to a car body repair shop. Please do not hesitate to contact us for advice. This body and other moulded fibreglass surfaces should be protected with a good quality car body wax polish.

The windows of your Romahome are made from double glazed acrylic sheeting. They should be looked after by washing road dirt away using a soft clean cloth.

The luxury-insulated lining may be kept clean by wiping with a damp cloth using a weak detergent solution.

The **INTERIOR FIBREGLASS** mouldings should be treated in the same way as the main body.

UPHOLSTERY should be brushed, vacuum cleaned or treated in the same way as household furnishings.

You must remember that all **MOVING METAL PARTS** (hinges, locks, threads etc.) require a frequent application of light lubricating oil or grease, particularly those parts which are exposed to the elements. We particularly draw your attention to the corner stabiliser jacking legs, water filler cap and rear step runners (if fitted).

Exposed **ELECTRICAL PARTS** including any 12N or 12S system, should be kept clean and protected. We recommend a liberal application of Vaseline. Battery terminals should be kept clean and protected with Vaseline.

HEATING SYSTEM

The NCC/SMMT Code of Practice requires that a motor caravan used in normal temperature conditions (i.e. above 0°C) shall have thermal insulation level or be equipped with heating appliances so that a mean internal temperature in the living area is maintained at not less than 20°C. For a small motor caravan the user shall be informed when normal insulation levels cannot be met!

The Duo and Duo Plus are classified as a small motor caravans and are insulated for use in normal temperature conditions. You are advised however, that unless the EBERSPACHER D4WSC Heating System is fitted, the unit may not achieve the temperature differential levels stipulated.

Your motor home has been designed for comfortable use in average Spring to early autumn ambient temperatures. For owners intending to use their motor-home for prolonged periods in ambient temperatures below 10 C, in particular temperatures below 0C, it is recommended that an approved heating system is fitted. Any heater must be of the room sealed type, maximum output 1.6kw, and installed by a qualified fitter in accordance with the manufacturer's instructions and the **requirements** of ISO 83772.

EBERSPACHER D4WSC HEATING AND HOT WATER SYSTEM. (if fitted)

Please follow the instruction laid out in the manufacturer's guide with regard to the operation and maintenance and appended to this manual.

IMPOTRANT: Never use portable heating equipment, other than electric heaters that are not of the direct radiant type, to avoid a fire or asphyxiation hazard.

AWNING (advice on erecting)

The canvas and poles are packed separately, so that the first operation is to take out all the metal poles and sort them. There are four legs, two eaves, and one which, when assembled forms the ridge.

- **STEP ONE**

Slot together the ridge poles, which are all, joined together with either an elastic band or spring. When joined, the shape formed will resemble a roof.

- **STEP TWO**

Take the two eaves poles and join together, then fit to either side of the ridge structure.

- **STEP THREE**

Slot a leg into each of the four corners, but leave the leg poles at half length so that the whole structure is only at waist height.

- **STEP FOUR**

Unpack the canvas and draw it over the frame, then go inside and lift the whole structure to it's full height, joining the legs, (it's easier if two people complete this operation).

- **STEP FIVE**

The whole awning can be moved to its final position at this stage. Once sited, the plastic flaps at the bottom should be turned in, and the legs positioned on top of the mud flaps at the corners.

- **STEP SIX**

Peg the guy ropes at each corner to the ground. Before pegging around the sides ensure that both door flaps are zipped together and start by pegging each corner, so that the canvas is nice and taut.

- **STEP SEVEN**

To join the Romahome to the awning the vehicle should be positioned with the rear stable door as close as possible to the narrow zip up opening in the back of the awning.

Around this opening is a plastic sleeve with an elasticated drawstring. The sleeve should be pulled over the back of the Romahome and pegged down each side.

You must ensure that the awning does not obstruct the refrigerator ventilators.

For added comfort, the awning comes with an extra length of mud flap, which has suction cups fitted, this should be placed along the bottom edge, under the rear door of the Romahome to stop any draught entering in from under the vehicle.

IMPORTANT ADVICE

VENTILATORS

Especially those for the gas locker and fridge vents must not be obstructed Your safety depends on it.

IN CASE OF FIRE

GET EVERYONE OUT, then:

- 1 Switch off the engine.
- 2 Switch off Fuel/ Gas/ Electricity.
- 3 Raise alarm and call the Fire Brigade.
- 4 Tackle the fire if it is safe to do so.

FIRE PRECAUTIONS

- 1 Children should not be left alone.
- 2 Make sure you know the location and operation of escape doors and windows and keep them clear of obstructions.
- 3 Keep all combustible materials clear of all heating and cooking appliances.
- 4 Provide a 2kg dry powder fire extinguisher. It should comply with BS 5423 secured near the main exit door and a fire blanket next to the cooker. Know how to use them.

BEFORE MOVING OFF

- 1 Turn off the gas supply and all appliances.????
- 2 Raise corner steadies/ legs.
- 3 Lower roof lights/ vents.
- 4 Secure all loose items.
- 5 If in use switch the fridge. to 12 Volt.
- 6 Disconnect mains hook up.
- 7 Stow away any wastewater facility.
- 8 Ensure all doors and windows are properly closed.
- 9 Ensure cab seats are locked in the proper position.
- 10 Make reference to the base vehicle handbook for matters relevant to the motor caravan as a road vehicle.

DRINKING WATER

Water left in a fresh water tank for extended periods may become unsuitable for drinking or washing purposes.

GAS HOSES

Must be inspected regularly for deterioration and renew, as necessary, with the approved type, in any case no later than any expiration date marked on the hose.

GAS CYLINDERS

should be stored in an upright position. Use only Butane Gas at 28MB or Propane Gas at 37MB. (see appliance Instructions)

IMPORTANT

SWITCH OFF all appliances and lamps before disconnecting the battery.

Never allow modification of ELECTRICAL or LPG. Systems and appliances except by qualified tradesmen.

INTERIOR LUGGAGE RESTRAINING BELTS.

These items are only fitted at the customer's request, they are not intended for use as occupant seat belts.

TOW BARS

If fitting a Tow Bar please seek professional guidance for safe working loads. Island Plastics cannot be held responsible for items not fitted at their factory or not approved by them. Island plastics can take no responsibility whatsoever for injuries That may be incurred in the event of an accident.

THE MOTOR CARAVANNERS CODE As prepared by the Motor Caravan Section of the SMMT

CAMP SITES

ARRIVALS: Report to reception immediately on arrival.

VEHICLE MOVEMENT: Keep to roadways unless otherwise stated. Adhere to speed limits. Note that these are generally 10MPH. Remember that the stopping distance on grass is considerably greater than that on tarmac. Only a person in possession of a current driving licence may drive on the site. Park correctly as advised on your pitch. Where possible leave 20ft of free space around your vehicle.

USE OF SITE APPLIANCES: Use the electrical mains hook-up in the correct manner and with caution. Ensure that all fresh water tap/connections are turned off after use. Have care and consideration when using all facilities (toilets and showers etc.) and leave clean and tidy. Young children should be escorted.

www.smallmotorhome.co.uk

WASTE DISPOSAL: If the vehicle is not fitted with a wastewater tank, a suitable receptacle should be put below all wastewater outlet pipes. Do not let these containers overflow.

Dispose all waste water where instructed.

Empty effluent from chemical toilet where instructed.

To avoid possible damage to sewage purification works only approved chemical fluids be used. In no circumstances may coal, tar, phenol or caustic soda based fluids be used.

Disposable napkins and similar bulky items must not be put into chemical closet emptying points but should be placed in the container provided.

Put all litter in containers marked for this purpose.

NOISE: Do not make excessive noise. Children should be restrained from making excessive noise.

Flying kites and model aircraft and the use of items like catapults or air guns as well as ball games should not be permitted among, or close to the motor caravans.

Musical instruments, record players, radios and televisions should not be used to the inconvenience of other people on the site.

Open and close doors quietly.

Power generators must be adequately silenced and used with consideration.

DOGS & OTHER PETS: All dogs and other pets should be kept under control.

Unless permission has been granted no animal should be allowed loose on site and leads should not exceed 10ft.

No animals should be allowed in the shower/toilet blocks.

Do not let dogs foul the site.

FIRE PRECAUTIONS: Adhere to, and take note of all fire precautions noting the whereabouts of the fire points. Although not compulsory, it is recommended that 1 x 2kg dry powder fire extinguisher is carried. It should comply with BS5423 and be marked BSI or FOC approved. It is important to check at regular intervals that the extinguisher is working as is required of types of meeting BS5423. Careful thought is necessary for the positioning of the fire extinguishers, which should be near the door but not too close to the cooking equipment where sudden flames could make it unreachable. In the kitchen area a fire blanket is a worthwhile precaution. Unless permission has been given, consideration should be given to the annoyance that can be caused by other users of the site. Open fires are not allowed.

AWNING AND TENTS: Awnings and tents should only be used when permission has been obtained. When on grass and staying for more than a few days the ground sheet and/or other side flaps of awnings should be periodically raised in order to avoid damage to the ground.

DEPARTURE: Leave the pitch clean and tidy. On leaving check out with the reception on paying the required dues.

Romahome Duo,
Romahome Duo Plus

WILD CAMPING: camping away from licensed sites, without the permission of the landowner or his agents, is not allowed in the United Kingdom. When permission has been granted all aspects of this code should be adhered to. On no account should:

- Litter be disposed of other than in the receptacles provided.
- Water be allowed to escape from the vehicle.
- Chemical toilets be emptied except into the disposal places agreed with the owner.
- Washing or similar be hung outside the vehicle.

PARKING: Motor caravans should only be parked in approved places. When using the facilities of a motor caravan care and consideration should be given to those around you.

DRIVING: When using a motor caravan on either the public highway or private roads the Highway Code should be complied with and full consideration given to other road users.

In the event of a motor caravan travelling slowly and there being a queue of traffic behind, the driver of the motor caravan should, where possible, pull over in order to let the other traffic pass.

When the vehicle is in motion it is compulsory that all passengers are seated and the seat restraint straps worn.

Before moving off elevating roofs should be lowered and correctly secured, and top hinged windows closed. Likewise all doors and access lockers and gas containers and chemical toilets must be properly closed.

Exterior steps should be properly retracted and secured.

When the vehicle is being refuelled or on a ferry, all gas systems must be turned off.

Gas appliances should be used when the base vehicle is in motion when the manufacturer of the appliance permits such.

HANDBOOK: Before using a motor caravan all aspects of the handbooks produced by the chassis manufacturer and converter must be read and adhered to.

ENVIRONMENT: Care and consideration should be taken to protect the environment. Observe the Country and Coastal Codes shown in this leaflet.

THE COUNTRY CODE: Enjoy the countryside but respect its life and work. More people than ever before are exploring the countryside, interested in farming, plant life, bird watching or just observing the general wildlife. Whatever your interest, there is a lot to learn, but please observe the following code:-

- Guard against all risk of fire. Hay and heath land catch alight easily and once ablaze are very hard to put out. **REMEMBER - FIRE SPREADS QUICKLY.**
- Keep to the public paths across farmland.
- Use gates and stiles to cross hedges and walls.
- Leave livestock, crops and machinery alone. View from a distance.
- Take your litter home - it is unsightly and harmful to wildlife.
- Help keep all water clean.
- Take special care on country roads.
- Make no unnecessary noise. Most animals are very timid, noises can disturb them unnecessarily. If you want to get the best of the country go quietly.

THE COASTAL CODE: As our coastlines are increasingly used for recreation and education the following suggestions are made to enable us to enjoy our inheritance and preserve it for prosperity.

DISTURBANCE MAY MEAN DEATH! Do not trample about, move rocks unnecessarily. Do not frighten birds or seals. Do not spill detergents, solvents or fuel from boats as these can kill marine life. When sailing moderate your speed - the wash from a fast boat can destroy banks and nests. Live molluscs and crustaceans need not be collected as souvenirs - dead shells can usually be found. Shellfish can take years to grow and fines can be imposed for not observing national regulations. Do not pull up seaweed unnecessarily. Make your visit instructive - not destructive. Look at material don't, remove it. Take notes and photograph, not specimens. Observe bye-laws, and be considerate to others. National Trust Property or Country Parks have regulations to protect wildlife. Follow these and the Country and Coastal Codes.

Warranty and Instructions for Equipment (where fitted)

Smev Cooker

www.smallmotorhome.co.uk

Electrolux Refrigerator

Chemical Toilet

Eberspacher Air and Water Heater

Carver P4 Heater

Shur Flo Water Pump

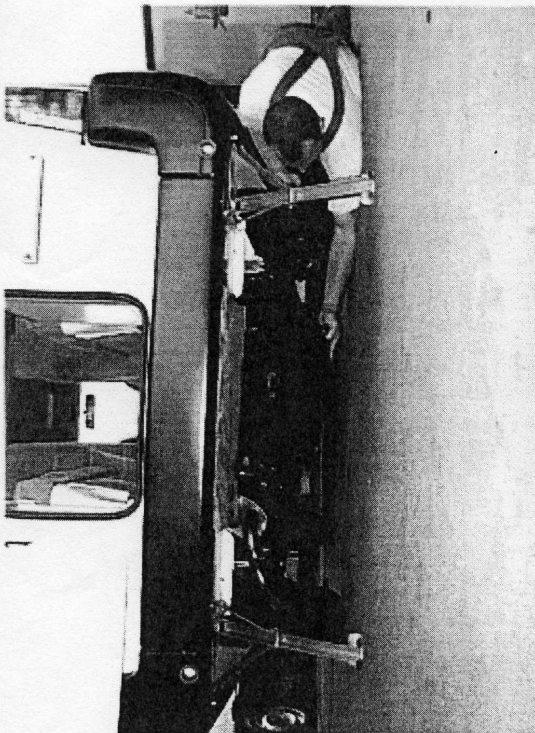
CEC225 Mains Electric Unit

Zig X7 Transformer/Charging Unit

Roma Club Details

This document is provided free of charge for the purpose of reference only and for personal use.
The document remains the property of www.smallmotorhome.co.uk at all times and the resale of these documents is strictly prohibited.

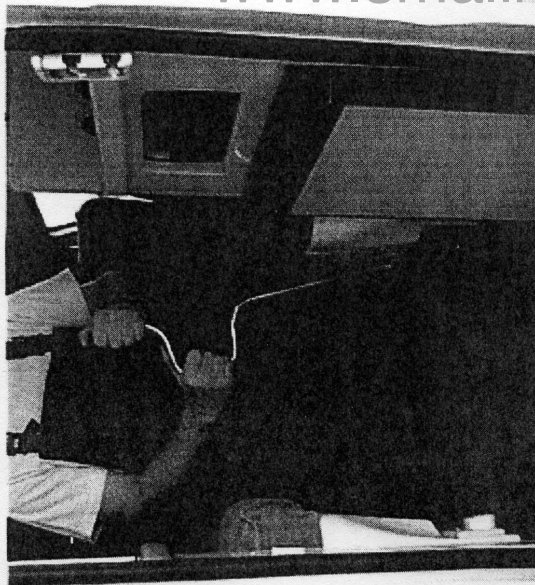
By downloading this document from this website you agree to abide by these terms.



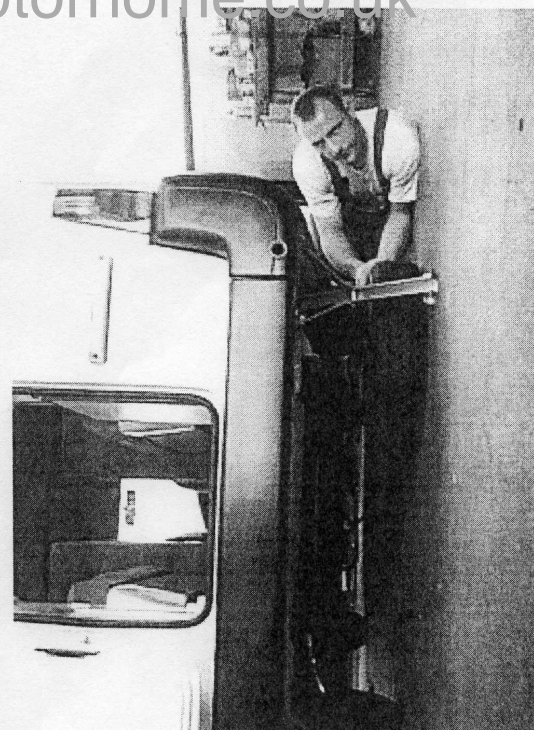
2) REMOVING SPARE WHEEL FROM CRADLE



4) REPLACING WHEEL

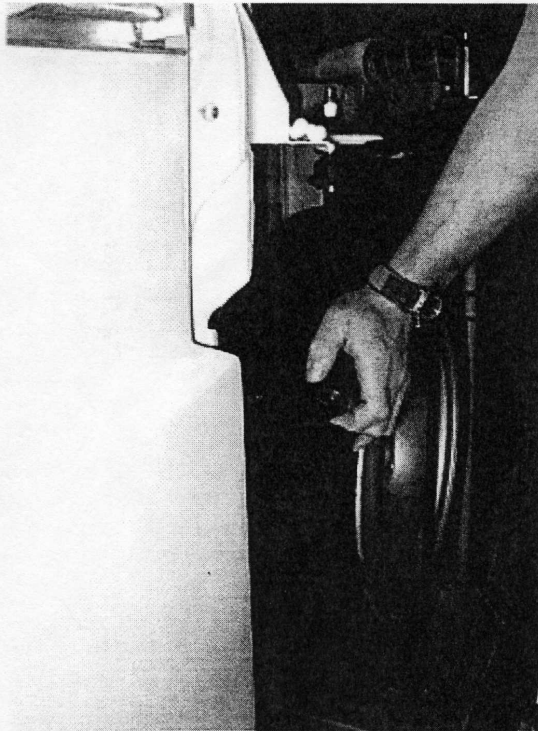


1) LOWERING SPARE WHEEL AND CRADLE



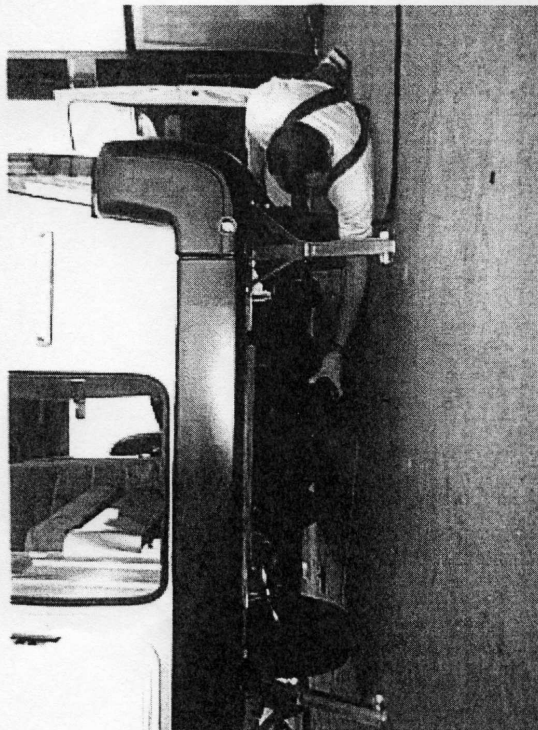
3) REMOVING WHEEL

www.smallmotorhome.co.uk

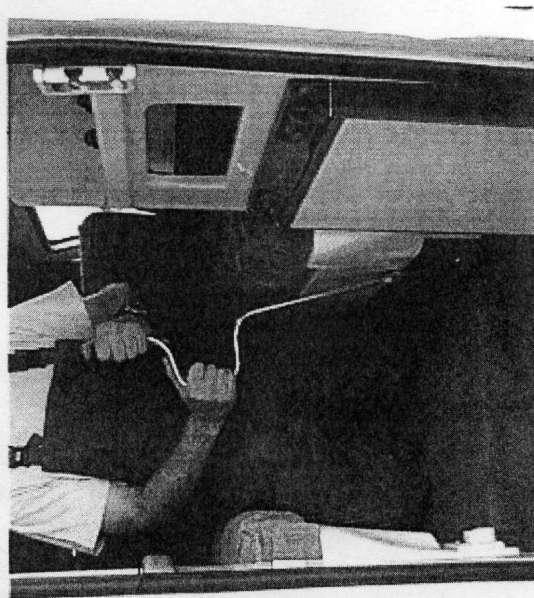


6) PLACING RETAINING HOOK

www.smallmotorhome.co.uk



5) LIFTING WHEEL INTO PLACE



7) RAISING SPARE WHEEL AND CRADLE