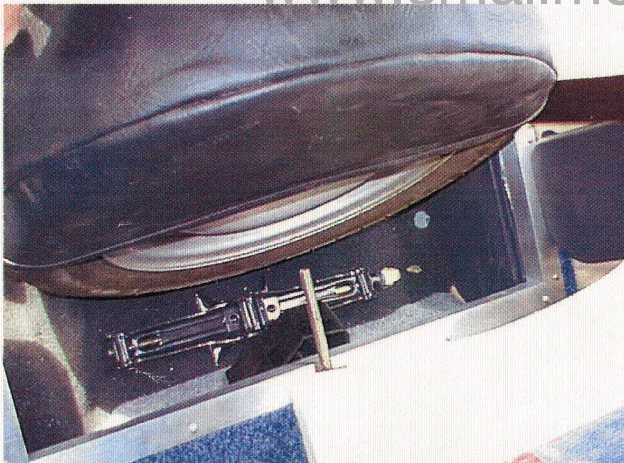
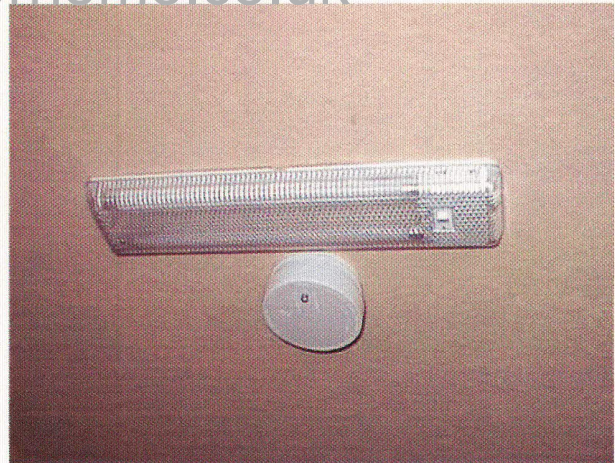
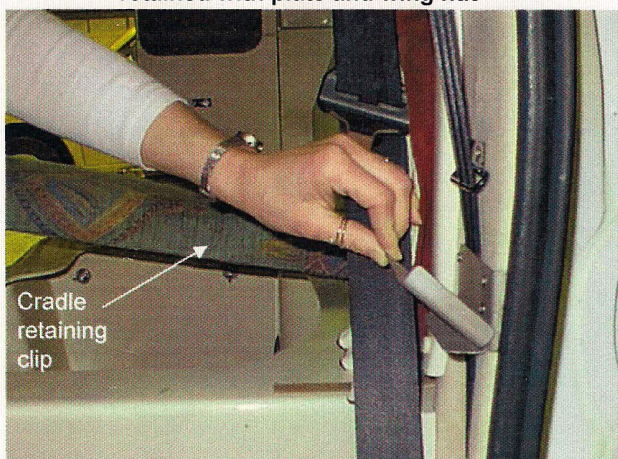
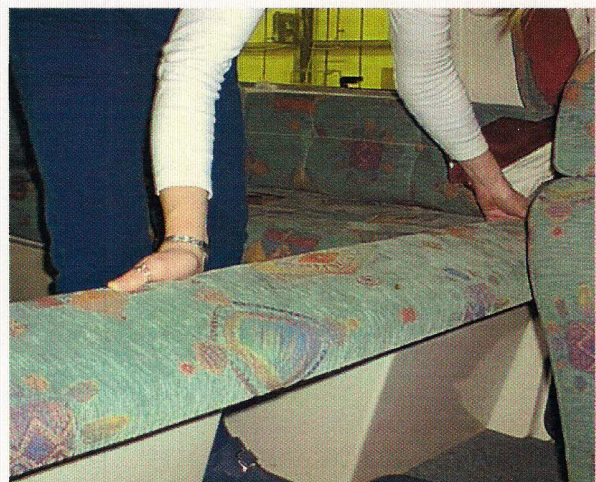
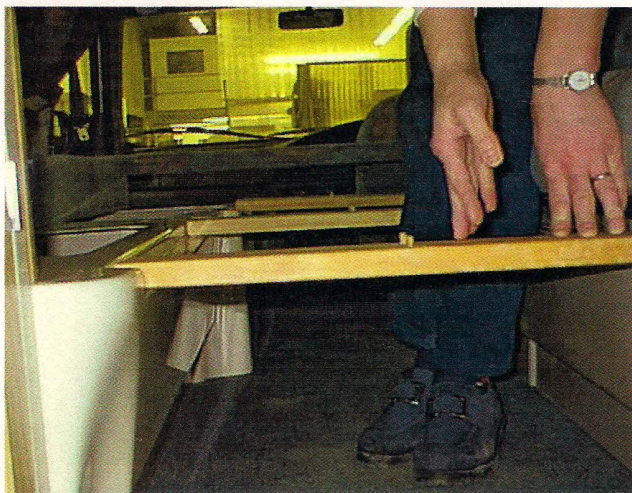


**1 Lowering stabiliser using brace****2 View showing Stabilisers in position****3 Vehicle jack and handle stowed behind the spare wheel retained with plate and wing nut****4 showing interior light and smoke detector****5 Unfolding the bed extension retaining clips****6 Positioning the bed extension**

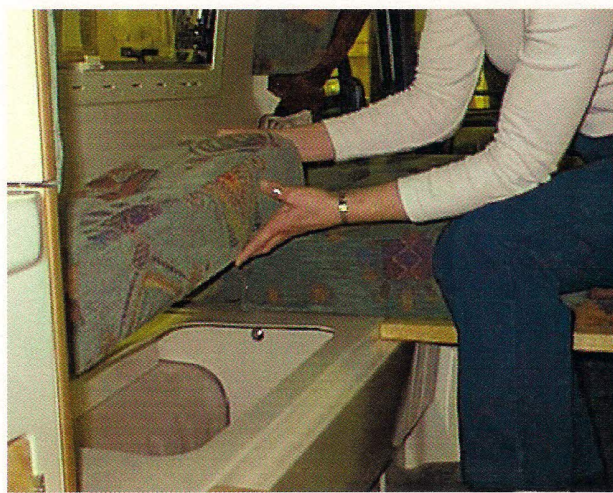
This document is provided free of charge for the purpose of reference only and for personal use. The document remains the property of [www.smallmotorhome.co.uk](http://www.smallmotorhome.co.uk) at all times and the resale of these documents is strictly prohibited.

By downloading this document from this website you agree to abide by these terms.





**7 Positioning the bed support struts**



**8 Arrange cushions using narrow ones on outside**



**9 Last, place the two centre cushions in position as shown and push down**



**10 View showing bed made and curtains drawn**



**11 View showing table and Poly step**



**12 View showing table in position**

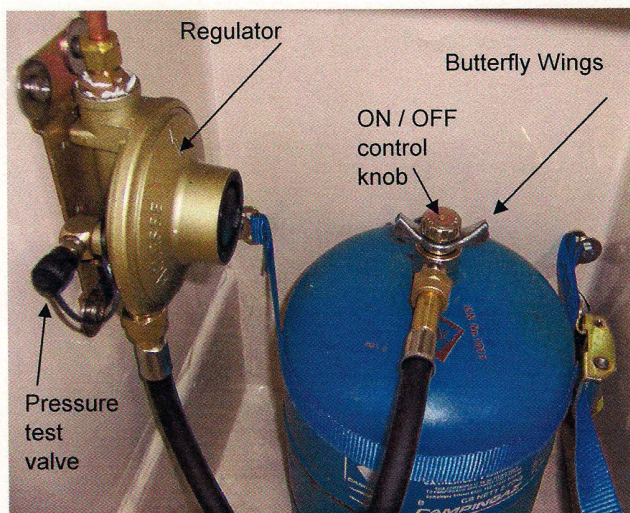
This document is provided free of charge for the purpose of reference only and for personal use.  
The document remains the property of [www.smallmotorhome.co.uk](http://www.smallmotorhome.co.uk) at all times and the resale of these documents is strictly prohibited.

By downloading this document from this website you agree to abide by these terms.





13 View showing door release pull catch



14 Showing gas cylinder connection



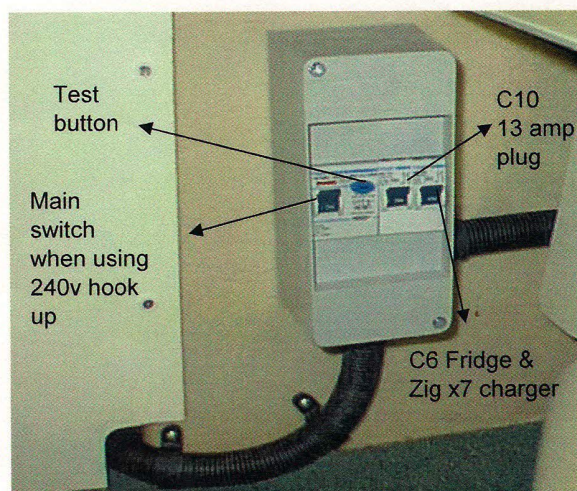
15 View of cold weather fridge/off-side locker



16 Mains hook-up socket &amp; Gas Cylinder locker



17 Passenger seat lifted showing Zig Unit, Isolation switch and Secondary Battery

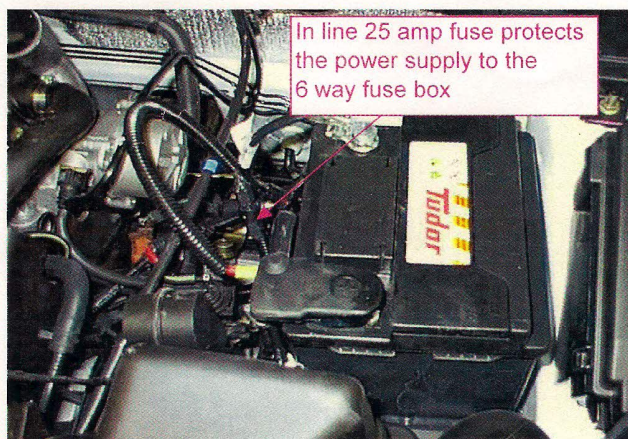


18 240-volt ELCB switch (Earth Leakage circuit breaker)

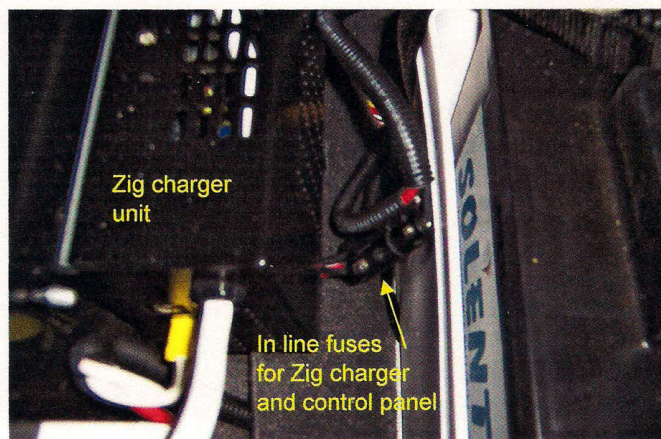
This document is provided free of charge for the purpose of reference only and for personal use. The document remains the property of [www.smallmotorhome.co.uk](http://www.smallmotorhome.co.uk) at all times and the resale of these documents is strictly prohibited.

By downloading this document from this website you agree to abide by these terms.





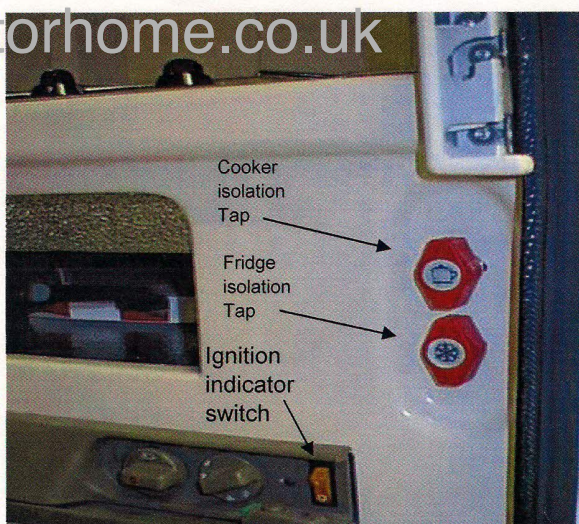
19 showing primary battery and inline fuse



20 Secondary battery, Zig unit and inline fuses



21 Fridge, Grill, Cooker



21 Gas Taps



22 12 Volt fridge switch



23 View showing 12 v socket

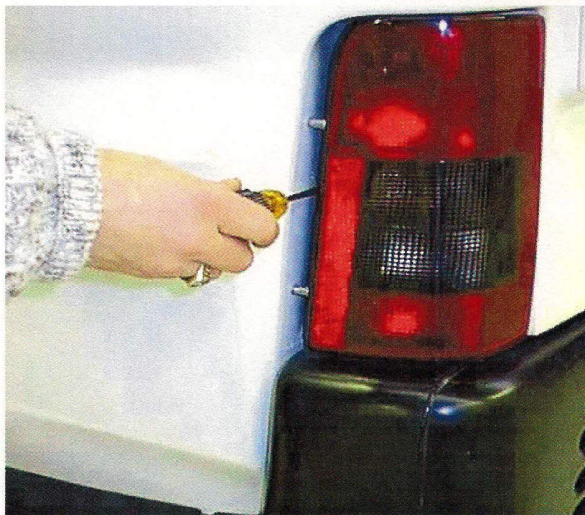
This document is provided free of charge for the purpose of reference only and for personal use. The document remains the property of [www.smallmotorhome.co.uk](http://www.smallmotorhome.co.uk) at all times and the resale of these documents is strictly prohibited.

By downloading this document from this website you agree to abide by these terms.





24 To remove back light



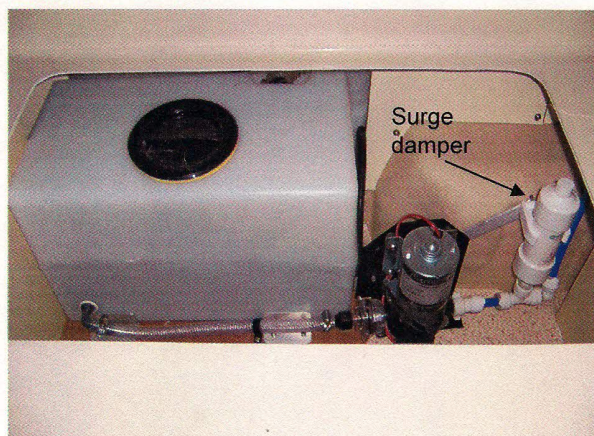
25 Remove screw bolt



26 Twist out light fitting



27 Remove bulb housing



28 Fresh water tank and in line pump

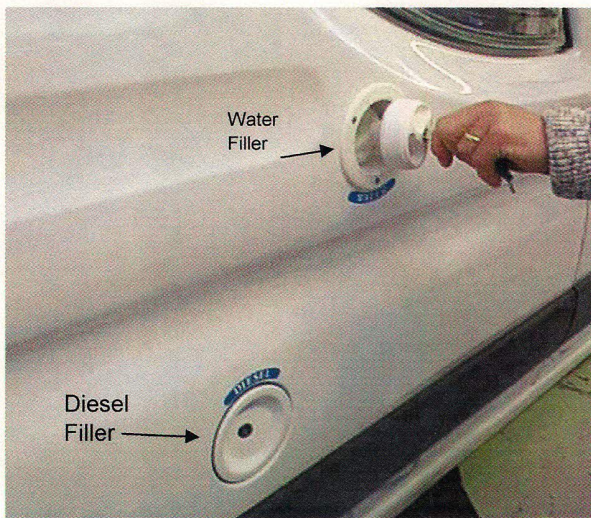


29 Waste water tank and drain tap

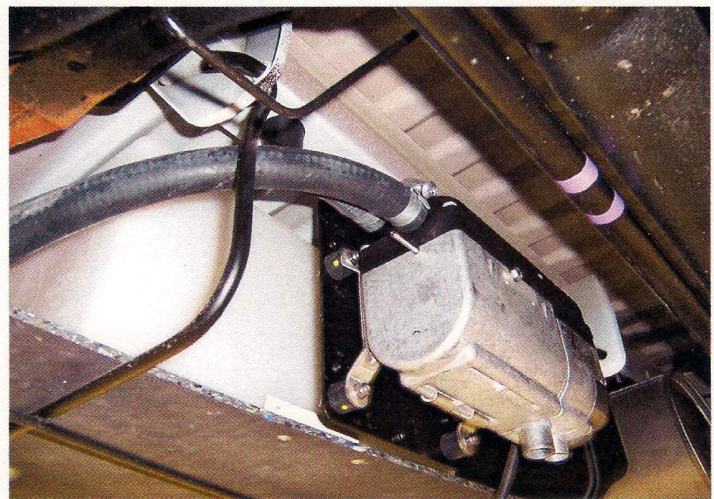
This document is provided free of charge for the purpose of reference only and for personal use. The document remains the property of [www.smallmotorhome.co.uk](http://www.smallmotorhome.co.uk) at all times and the resale of these documents is strictly prohibited.

By downloading this document from this website you agree to abide by these terms.





30 Water filler upper, Fuel Filler lower



31 Eberspacher's Hydronic burner unit on underside of Romahome



32 Zig & Eberspacher Control Panels

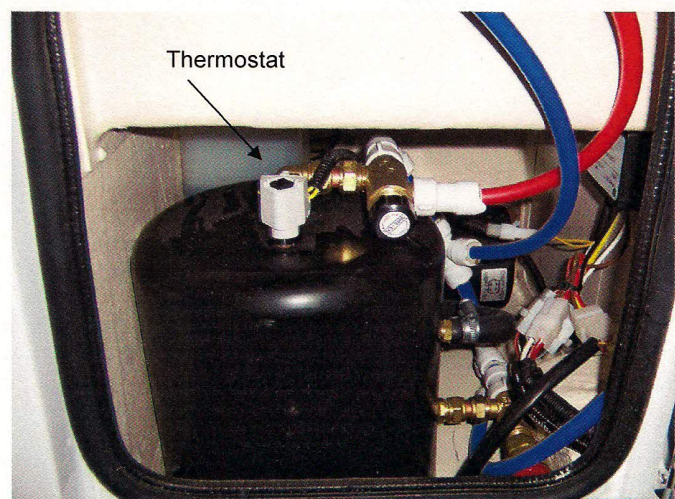


33 Eberspacher heater vents (where fitted)

[www.smallmotorhome.co.uk](http://www.smallmotorhome.co.uk)



34 Polythene header tank for antifreeze mix (where fitted)

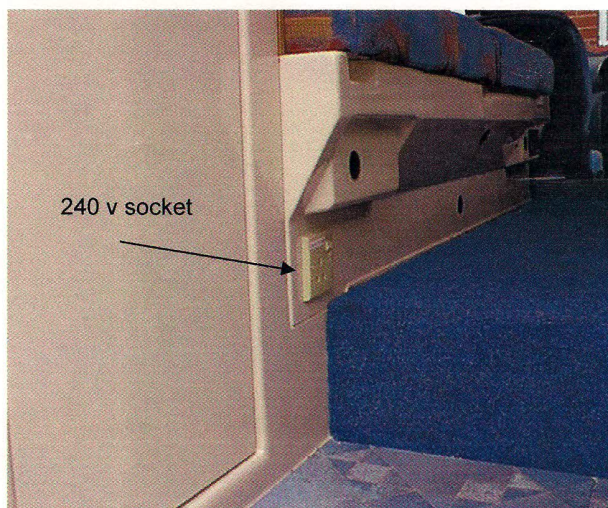


35 Eberspacher water tank sited in off-side locker (where fitted)

This document is provided free of charge for the purpose of reference only and for personal use. The document remains the property of [www.smallmotorhome.co.uk](http://www.smallmotorhome.co.uk) at all times and the resale of these documents is strictly prohibited.

By downloading this document from this website you agree to abide by these terms.

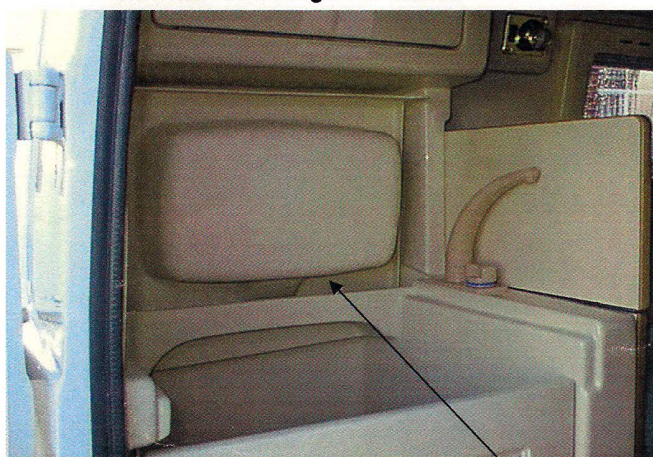




36 View showing 240v socket



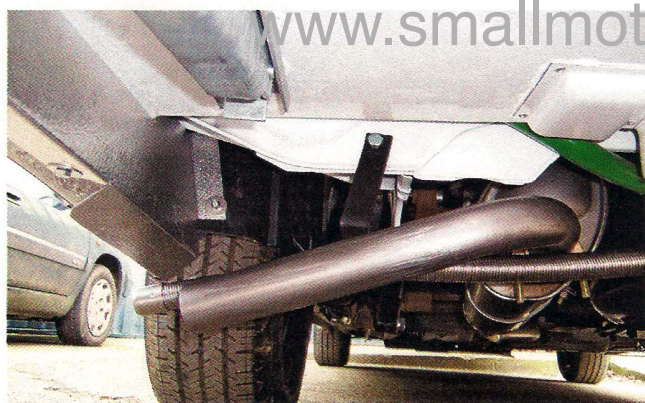
38 View showing sink ready for use



39 View Showing Sink in empty position and stowed



40 View showing toilet



44 Showing exhaust extension for Mark 2 Citroen

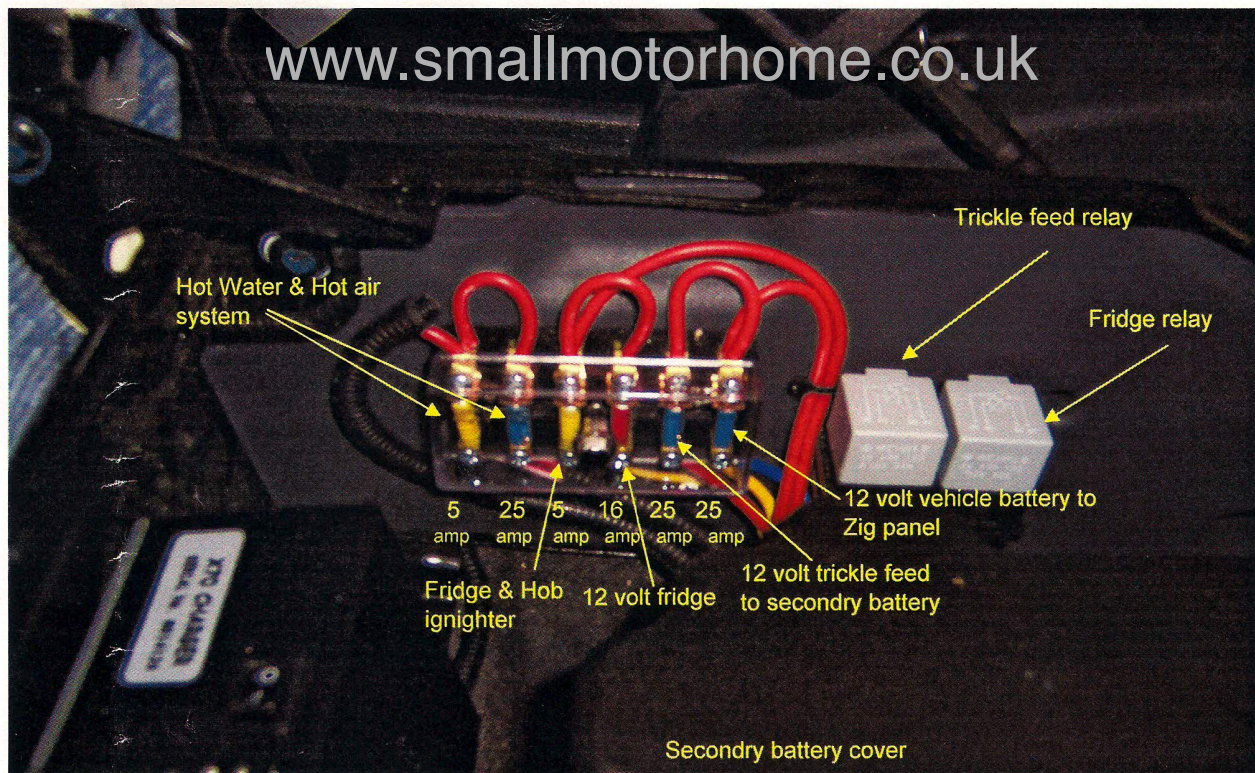
[www.smallmotorhome.co.uk](http://www.smallmotorhome.co.uk)

This document is provided free of charge for the purpose of reference only and for personal use. The document remains the property of [www.smallmotorhome.co.uk](http://www.smallmotorhome.co.uk) at all times and the resale of these documents is strictly prohibited.

By downloading this document from this website you agree to abide by these terms.



## Fuse box incorporating Hot Air &amp; Hot Water system



This document is provided free of charge for the purpose of reference only and for personal use. The document remains the property of [www.smallmotorhome.co.uk](http://www.smallmotorhome.co.uk) at all times and the resale of these documents is strictly prohibited.

By downloading this document from this website you agree to abide by these terms.