



IP MOTORHOMES

A Division of Island Plastics

Island Plastics, Prospect Road, Cowes, Isle of Wight, PO31 2AD
Tel: 01983 252451 Fax: 01983 250266



DESIGN AND CONSTRUCTION BY THE FINEST MOTORHOMING ENGINEERS



Romahome Hylo & Hytop,
the connoisseurs micro motorhomes



Hylo



Hytop



Uniquely, the **ROMAHOME HYLO** combines the Hytop's versatility with the extra ingredient of a lowered roof height to go where lesser micros dare not venture. It is also the only insulated touring coachbuilt leisure vehicle with an elevating roof of a construction and insulation quality to match the main body unit.

For the urban dweller Hylo is an elegant solution to the garaging, parking and freedom of urban movement, made possible with this small motorhome which is also perfectly practical to use for everyday transport. There's more in the virtues of lower height for travelling, as the reduced frontal area is a positive aid to improving the fuel economy, as well as improving the ride quality through a reduction to the centre of gravity and consequent improvement in handling.

With Hylo's rugged looking and durable shape, the layout plan follows closely the Hytop pattern, retaining the sensible priorities for lounge space, the ingenuity of the two part galley, and the big, firmly supportive double bed.

Since its introduction in 1988, Hylo has introduced a new generation of campers to the delight of owning a car size motorhome with a genuine capacity for serious, and if you feel truly rich, long distance camping of the more adventurous variety.

From a servicing point of view, both Hylo and Hytop have the distinct advantage of being Citroën mounted, with the brand's international coverage, and a pretty comprehensive potential for ironing out any possible problems to the living quarters section of the vehicle, given the now world wide spread of motorhome dealers and, the relative straightforward simplicity of the equipment fitted by Island Plastics.

With the roof raised there is close to six feet of headroom for working in the galley, in which the fridge contains all the perishable food, lockers under the sink the packets tins and utensils, and the ingenious stable door for the chef's view of the countryside, and removal of the cooking vapours, for after an hour's stretch on the swivelling seats makes everything right with the world.

Above left and below: the Hylo with roof and in its driving and sleeping positions.



Hylo



During its 12 year history the Citroën Chemo based **ROMAHOME HYTOP** has become the world's best selling micro motorhome. Coincidentally, it is also the strongest on account of its integral bonding of the GRP body to

Citroën's chassis cab, and that is mighty reassuring if you sort of ramping includes getting right off the beaten track, in Europe or beyond, because it is also true that the diminutive Hytop is famous for travelling in those out of the way places its bigger brethren wouldn't dream of venturing in.

There are very good reasons for the Hytop's enviable reputation; they have to do with size; shorter even than many estate cars to make it unobtrusive wherever it goes; with its relative simplicity in use, and the basic reliability and durability of its equipment in the long term. All qualities in evidence in its independently minded owners who scorn the complexity of the larger motorhomes.

While the passage of time has steadily refined the original 1988 concept, the layout is true to its fundamental priorities of providing the maximum possible area for seating and eating, combined with a workable two part kitchen with the fridge and cooking equipment on one side, and sink with cooker opposite. Workspace area, by the simple expedient of twin fold down flaps, is incredibly greater than that found in many of the regular size campers.

The bed too, at 5ft 2in long by 4ft 9in wide, is quite special not only in size, but also in the uncomplicated way it transforms the long users into the full vehicle width double bed. Space to store clothes, personal gear and non perishable foods, is generous in the under seat lockers, above the cab, and, the compact wardrobe area at the back of the sink area.

Outdoors or indoors, the free standing table is ideal, stowing away neatly above the cab after the eating, to give plenty of space for that afternoon nap or a sprawl with the feet up. The insulated GRP construction and double glazed windows minimise outside weather conditions, and a choice of optional heating systems operated from the bottled gas supply can maintain a comfortable temperature for the out of season excursions.



Below: The worktop adjacent to the sink and cooker can be folded in an upright position to give plenty of extra seating space when not in use.

Car sized motorhomes with interior capacity for serious camping

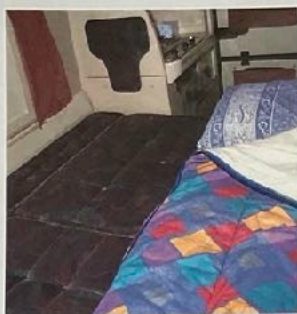
Romahome Hylo is an elegant solution for garage parking, while Hytop is famous for its size, shorter than many estate cars

DRIVING THE HI AND THE LO

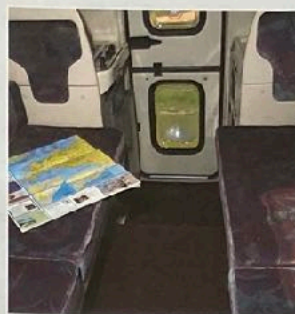
It's really not surprising how piloting these little machines is so very like driving a car, given the Champ van's car derivative origins which bring the comfortable driving position, controls close to hand, and ventilation, visibility and in-car entertainment to complete the picture. Noise levels too, even with the diesel motor option, are pleasantly subdued enough to listen to the radio comfortably, and cruise fast when the occasion demands without stress.

Ride quality from the combination of all-wheel independent suspension with front and rear anti-roll bars, is typically, effectively Citroën, whether it be large bumps at low speed, or the smaller variety at higher speeds. But then, Citroën were equipping their vehicles in such a fashion when elements of the competition were still using the leaf variety designed for those down curveyarcs.

As regards performance, the 1.6-litre diesel motor that powers the twins has a legendary reputation for retaining the old adage about 'not being able to have one's cake and eat it'; as evidenced by potential Romahome maximum speeds well in excess of what is legal, while at the same time, achieving fuel consumption figures exceeding 40mpg when maintaining cruising speeds at or below the 60mph figure.



Above: The table and seat cushions can be used in combination to make either two singles or a large double sized bed making for a very comfortable night's sleep.



Above and below: The spacious design of the Hytop gives you plenty of room to move around and more than ample storage space.

TALKING TECHNICAL

The Romahome Hylo and Hytop are both built on Champ chassis cabs, to which they are bonded to achieve an integral structure of impressive integrity to combine the body, chassis and cab. The benefit of using GRP for the body shell lies in its resilience where casual or accidental damage is concerned; the lack of deterioration in the long term; and consequent good investment value.

The all-wheel independent suspension systems from Citroën's expertise over 70 years developed from their philosophy that it should be the springing rather than the occupants to take whatever punishment the road hands out. MacPherson's tough struts handle things at the front end, and trailing links the rear, while anti-roll bars at both ends help to keep things on the level. Those trailing links are the key to why Romahomes wait over the bumps rather than thump as rear leaf springs can tend to.

While the 60bhp produced by the diesel motor is relatively modest, its stressless, long stroke performance and reliability are what really count when you're far from home, and the short, precise gearchange lever needs a minimum of effort. Low motor noise by diesel standards is a result of the indirect injection system used and the overall noise, ride and vibration levels, all help to confirm the Romahomes' reputation for stress free, long legged travel.



HYLO Vehicle Specifications and Key Features

Model: Romahome Hylo

Dimensions: Overall length 4.75m; overall width 1.54m; overall height 1.93m down; 2.14m up.

Power unit: 1759cc, four cylinder diesel motor developing 60bhp @ 4600rpm.

Turning circle: 9.9m (lock to lock)

Fuel capacity: 47 litres.

Weights: Maximum gross weight 1710kg; kerbside weight 1540kg; payload 170kg.

Bed sizes: Twin singles 530mm x 1580mm; double 1440mm x 1870mm.

Standard equipment: Wheel trims, free standing table, two burner hob with grill, 24-litre in-board fresh water tank, double glazed acrylic windows to the living quarters.

Options available: Eberspächer space and water heating with engine heat exchanger; Propan blown air heater; airlock tent.

Warranty: Two years on chassis

- Compact length, width and height for go anywhere travel.
- Low frontal area and centre of gravity for improved mpg and handling.
- Fully insulated elating tool.
- High maximum speed potential.
- Good scratch and damage resistance from Giff body shell.
- Comfortable driving qualities.
- No problem with town parking or garaging.
- Long term proven reliability for mechanical components and the living style equipment.
- Choice of furnishing fabrics.
- Attractive graphic scheme.
- Portable flush toilet storage.



HYTOP Vehicle Specifications and Key Features

(Compact size for getting right off the beaten track)

Car-like driving characteristics.

Frugal fuel consumption.

Diesel engine reliability.

All independent suspension.

Excellent service network.

Strong GRP body bonded to chassis cabs.

Body insulation.

Sensible provision for lounge space and kitchen practicality.

Choice of furnishing fabrics.

Aesthetically pleasing lines.

Model: Romahome Hytop

Dimensions: Overall length 4.75m; overall width 1.64m; overall height 2.3 m.

Power unit: 1769cc, four cylinder diesel motor developing 60bhp @ 4600rpm.

Turning circle: 9.9m (lock to lock).

Fuel capacity: 47 litres.

Weights: Maximum gross weight 1,710kg; kerbside weight 1,593kg; payload 115kg.

Bed sizes: Twin singles 530mm x 1680mm; double 1440mm x 1870mm.

Standard equipment: Wheel trims, free standing table, two burner hob with grill, 24-litre in-board fresh water tank, double glazed acrylic windows to the living quarters.

Options available: Eberspächer space and water heating with engine heat exchanger; Propan blown air heater; airlock tent.

Warranty: Two years on chassis



Romahome Hylo & Hytop, the micro motorhomes with big ideas

